

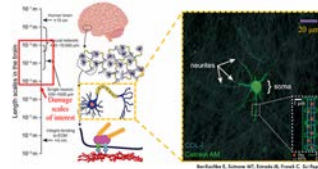
Biomechanics Research Overview



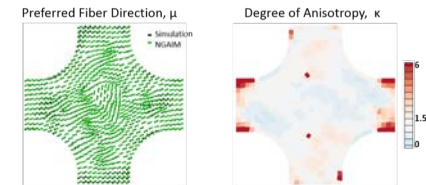
Department of
Biomedical Engineering
UNIVERSITY OF WISCONSIN-MADISON

Cell Mechanics

Christian Franck (cfranck@wisc.edu)
Jacob Notbohm (jknotbohm@wisc.edu)



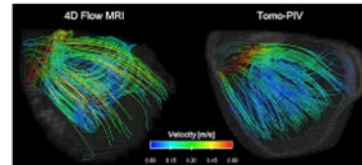
www.franck.engr.wisc.edu



www.cbl.engr.wisc.edu

Cardiovascular Biomechanics

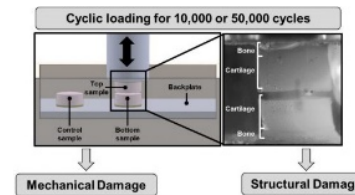
Colleen Witzenburg (witzenburg@wisc.edu)
Alejandro Roldán-Alzate (roldan@wisc.edu)



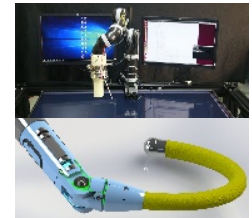
www.uwcvfd.engr.wisc.edu

Orthopedic Biomechanics

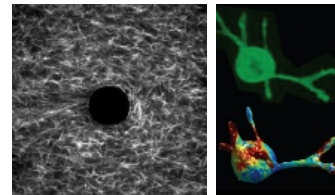
Corinne Henak (chenak@wisc.edu)
Josh Roth (jdroth2@wisc.edu)



www.henaklab.engr.wisc.edu



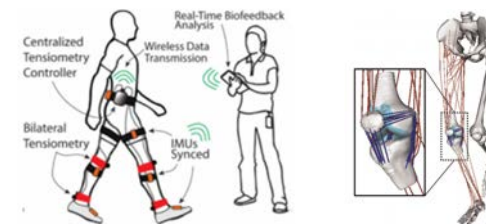
www.reach.wisc.edu



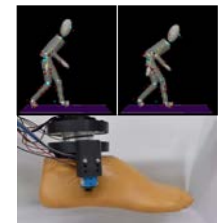
www.notbohm.ep.wisc.edu

Neuromuscular Biomechanics

Darryl Thelen (dgthelen@wisc.edu)
Brian Heiderscheit (heidrscheit@ortho.wisc.edu)



www.uwnmbi.engr.wisc.edu



www.uwbadgerlab.engr.wisc.edu

Biomechatronics

Peter Adamczyk (peter.adamczyk@wisc.edu)
Michael Zinn (mzinn@wisc.edu)



www.bamlab.wisc.edu