



Crazy for SWE Regionals?

by Jill Grodecki

It's Halloween weekend in Madison, Wisconsin. Every single UW student is running around like mad on State Street in a crazy costume. Well, almost every student. There are three SWE girls missing in action: Emily, Ssu-Wei, and Jill. Are they crazy? What could possibly be more important than Halloween in Mad-town? I know what you are thinking. Badger Football of course! Well, they were in Iowa, but they didn't get to see the Badger game. They were too busy with the SWE Region H Conference in Ames, Iowa.

This conference brought together SWE sections from schools all over the Mid-West. The theme of the conference was "Shifting the Focus: Enhancing Ourselves." What does that have to do with engineering you ask? The goal was to help us learn how to achieve balance in our lives and become more well-rounded people. There were a wide variety of self-enhancing sessions to attend throughout the day. Topics included yoga, personality assessments, stress and time management, and positive thinking.

(continued on page 3)

In this issue...

- SWE Regionals
- Section Meeting with Cap Gemini Ernst & Young
- SWE Care Care Workshop
- Polygon Advising Fair
- IBM Visits with SWE
- Big Sib Lil' Sib Update
- School Outreach Winter Blitz
- Social Events Summary
- ETC Camp

Cheesy SWE Section Meeting

by Christy Palmer

On Thursday, November 16, SWE members got to discuss what cheese means to them with Cap Gemini Ernst & Young. Cheese, you ask? Yes, we discussed the book, Who Moved My Cheese?, by Spencer Johnson. The book tells a great story about these 3 mice in a maze with cheese. You might think that's corny and wonder what you could get out of reading such a book. Actually, one can gain quite a bit. In the book, each mouse portrayed a different personality, which reacted differently when faced with conflict. In the book, the conflict was that the cheese was all gone and they had to find a new source of cheese. The cheese represents what you want in life. So we discussed how to get what we want in life based on our own specific attitudes. The majority of the time was spent explaining the analogy in the workplace and school. Specifically we conversed about how to work with other types of personalities different than your own, especially in team settings.

The meeting was very informative and worthwhile. Free copies of Who Moved My Cheese? were given out to those who shared stories and their own experiences for everyone to learn from. It was also great to see the '98-'99 SWE President, Jessica Rannow, again too. Jessica was one of the company representatives that presented at the section meeting. Free subs were also served and enjoyed by all.



SWE OFFICE!!
333 N. Randall
Room 301

Office Hours:
9:55 - 4:30
Monday - Friday

Phone Number:
262-3387

E-mail:
swe@cae.wisc.edu

Mailing address:
1513 University Avenue
Madison, WI 53706

Fax:
265-6643

Website:
[www.cae.wisc.edu/~swe/
homepage.html](http://www.cae.wisc.edu/~swe/homepage.html)

Contacting SWE

<u>Position</u>	<u>Officer</u>	<u>Email</u>
President	Emily Roland	ejroland@students.wisc.edu
Vice President	Jeanette Ehr	jmehr@students.wisc.edu
Secretary	Lee Ann Bush	PaleBlueIS@aol.com
Treasurer	Siobhan Cornwell	sjcornwe@students.wisc.edu
Outreach	Briana Novak	bknovak@students.wisc.edu
Graduate Affairs	Ssu-Wei Loh	sloh@students.wisc.edu
Community Service	Kristy Pociask	kpociask@students.wisc.edu
Corporate Relations	Stephanie Herdeman	herdeman@students.wisc.edu
Dist. Membership	Martha Voytovich	mevoytov@students.wisc.edu
Education	Jenny Hron	jmhron@students.wisc.edu
ETC	Megan Gullicksrud	mgullicksrud@hotmail.com
	Kathryn Foley	kefoley@students.wisc.edu
EWI	Tracy Allen	tracyallen_2000@yahoo.com
Fundraising	Rebecca Wuellner	rrwuelln@students.wisc.edu
Girl Scouts	Tara Mahan	tjmahan@students.wisc.edu
	Nicole Jones	nmjones@students.wisc.edu
Historian	Debra Rugowski	derugowski@students.wisc.edu
Homecoming	Ryan Klemme	rwklemme@students.wisc.edu
Mentoring	Mary Jischke	mfjischke@students.wisc.edu
	Bonnie Shum	bonnie_shum@hotmail.com
Newsletter	Christy Palmer	cpalmer@students.wisc.edu
Polygon	Cori Zancig	cjzancig@students.wisc.edu
Programming	Alonna Albertus	afalbertus@students.wisc.edu
Publicity	Jill Grodecki	jagrodecki@students.wisc.edu
School Outreach	Kelly LaNou	kjlanou@students.wisc.edu
Social	Farida Munir	fmunir@students.wisc.edu
Tech Events	Lindsey Addison	lmaddison@students.wisc.edu
	Manasi Valecha	mmvalecha@students.wisc.edu
Web	Andrea Wulz	wulz@cae.wisc.edu

Congratulations to...

All Graduating Seniors!

Good Luck in the Future!

Thanks for your Time and
Involvement in SWE!



SWE Trivia Contest!!

1. Where are SWE Regionals being held next year?
2. Who Hosted the SWE Car Car Workshop?

All answers can be found within this issue. Email your answers to cpalmer@students.wisc.edu, with the words "SWE contest #3" in the subject line. Be sure that your email message includes your name in it somewhere, or else you won't be known! Send in your answers before November 17th, 2000. One winner will be chosen from all the correct answers, and awarded a prize. Must be a SWE member to enter, but SWE officers are not eligible to win. (Sorry!)



(continued from page 1)

Along with the sessions, there were also two outstanding motivational speakers and other fun events planned for the evenings. There was a Halloween Bash on Friday night with movies and snacks. On Saturday night, we attended a mystery dinner theatre banquet. During the banquet we heard from conference sponsors and played a “who done it” game. Following the banquet, there was a dance party at an establishment on campus. This was a great way to socialize with other SWE sections and with the locals.

Now, you ask, was it really worth it? I know that it’s crazy to miss Halloween weekend in Madtown, but honestly, it was worth it. The weekend was motivational and tons of fun. It was neat to get out of Wisconsin, visit another campus, and hang out with people from other schools that share common interests. It was also a great opportunity to get to know fellow Wisconsin SWE members a little better. We’ll save those stories for another time though! So, get prepared for next year... Minnesota here we come!

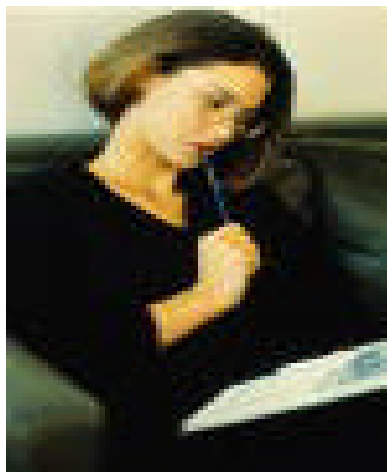


Car Care Workshop

by Ssu-Wei Loh

On October 24, about 20 of SWE’s members gathered at the Society of Automotive Engineers (SAE) garage on the corner of Park and Regent Streets, all ready to get their hands dirty and learn some things about how to take care of their cars. This workshop was organized with the assistance of SAE as well as the Ford Motor Co.

Everyone attending the workshop had varying levels of car care knowledge, some knew quite a bit, while others had no clue at all. The evening started with members being divided into small groups, each assigned to an “auto pro.” The instructors proceeded to show their groups the basics of the what, where, and how to’s of caring for an automobile. A few groups finished up by putting the women to work by changing tires, checking oil levels, and changing the engine oil. Other groups took a less hands-on approach, choosing to identify the important engine and car parts, typical car problems, and then answer the questions that SWE members had about some of the problems they had encountered in the past. Either way, members came away from the workshop with a little more knowledge for what to do with their vehicles than they had arrived with. Of course, the session could not end without food and beverage. Members relaxed around the shop while chowing down on some pizza, courtesy of Ford Motor Co.



Elections & Section Meeting with IBM

by Christy Palmer

Monday, December 4, was an exciting night for SWE as the Elections for next spring were held and followed with a section meeting with IBM. The Elections were short. Katie Hickel is the new Fundraising Chair, while Web Page and Polygon Chairs are still open.

Then dinner was served. While everyone was munching on pizza, they worked in groups on probability challenge problems presented by IBM. IBM also presented some information about their company and a speech consisting of the Do's and Don't's when you first start a job at a new company. IBM mentioned how valuable a mentor at work is and how you might even want to find more than one. A mentor from your department can answer all of your technical questions as well as general questions about the company itself. Another mentor that holds the position you want to have in the future would also be very beneficial, because they could share their experiences of getting to where they are with you as well as opening positions within the company that they might hear of first. IBM shared many other valuable suggestions as well.

Polygon Advising Fair: Spring '01

by Megan Gullicksrud

On November 2nd, SWE, along with several other engineering student organizations welcomed underclassmen to aid in the selection of classes for the upcoming spring semester. The underclassmen who attended were able to ask the older, more experienced students in their possible major about the difficulty of classes as well as any recommendations for professors. Undecided students were able to talk to students from any engineering discipline to learn more about the different types of engineering. This event provided an opportunity for students of all ages and majors to mingle outside of class.

Engineers Having Fun - Can This Be?!

by Farida Munir

This past semester has been pretty much a flurry for most of us, but it doesn't mean the SWEsters can't have a good time! Halloween for SWE involved "trick-or-treating for cans" as well as a Halloween party the Friday after. Those who did not make it to the party, missed out on a lot of goodies - so make sure to attend the next events in order to make up for the loss! Thanks to Paolo for helping with the party.

Other SWE events around include the dance party held in collaboration with Society of Hispanic Engineers (SHPE), and the fundraising event, the Winter Formal. Both were huge successes. Plans for next semester include a trip to the Museum of Science and Industry in Chicago. Therefore, be sure to keep your eyes and ears open for details.

If you have any other social ideas or feel like being part of the committee, contact Farida at fmunir@students.wisc.edu.



Big Sib Lil' Sib Update

by Mary Jischke

Big/Lil' Sibs has had some great events since we went bowling in October. On November 11, we went to Comedy Sportz, an improvisational comedy club. More recently, on November 28, we watched the movie, "Office Space," and snacked on pizza and other goodies. Soon we will be having an event for all the Big/Lil' Sib groups that have completed our mission. The mission includes having lunch or dinner, going to a SWE meeting, studying at a library, e-mailing each other, calling each other, taking a trip, and an event chosen by the individual group.

It's been great getting to know each other while having fun at the Big/Lil' Sib events!

Engineering Tomorrow's Careers Camp

by Kathryn Foley

For over 7 years, our SWE chapter has hosted a week-long summer camp for girls entering their senior year of high school. The goal of Engineering Tomorrow's Careers (ETC) is to stimulate interest in engineering and the sciences. While at ETC, in addition to the exposure to engineering, the girls have the opportunity to experience "college life" at UW-Madison. The week is structured to include a multitude of activities, such as lectures and labs focused on all of the various engineering disciplines, as well as social activities.

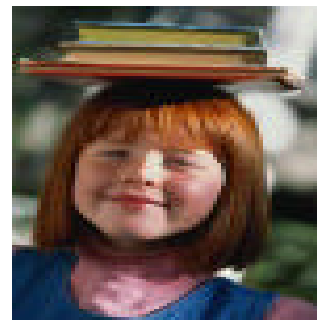
This year's camp is scheduled for June 17-22. While early planning has already begun, most of our efforts have been focused on brainstorming. Soon we will be busy scheduling activities, contacting professors and companies, sending out applications, stuffing envelopes, as well as many other related tasks. ETC is a great opportunity to get more involved in SWE - besides being a fun and fulfilling experience.

If you have any interest in helping with ETC please contact Kathryn Foley (kefoley@students.wisc.edu) or Megan Gullicksrud (mgullicksrud@hotmail.com).

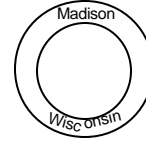
School Outreach Winter Blitz

by Kelly La Nou

SWE School Outreach is a program that allows SWE volunteers to get out there in the younger part of the community by visiting local middle schools and high schools. The goal of the program is to encourage interest in science, engineering, and UW-Madison. However, every winter break, School Outreach takes a two-day trip or 'Winter Blitz' to an area in Wisconsin outside of the Madison area. A typical School Outreach class presentation includes talking to students about what engineers learn and do, and giving demonstrations. If this sounds like fun to you and if you are interested in getting involved with School Outreach, contact Kelly LaNou at kjlanou@students.wisc.edu.



Society of Women ENGINEERS



Nonprofit
Organization
U.S. Postage
PAID
Madison, WI
Permit No. 658

1513 University Avenue
Madison, WI 53706



SWE SPOKE

Issue 4
2000-2001

The Society of Women Engineers Newsletter

Editor:

Christy Palmer